



For Lease

Keith Business Centre
1225 East Keith Road
North Vancouver, BC



Flex office/warehouse space available

Ian Whitchelo*, Principal
604 647 5095
ian.whitchelo@avisonyoung.com
**Ian Whitchelo Personal Real Estate Corporation*

Terry Thies*, Principal
604 646 8398
terry.thies@avisonyoung.com
**Terry Thies Personal Real Estate Corp.*



Property details

AVAILABLE AREA

Unit 3 - 15,242 sf
Available immediately (office and warehouse)

ASKING RENTAL RATE

Contact listing agents

ADDITIONAL RENT (2023 ESTIMATE)

\$8.63 psf / annum (includes utilities)

**Management fees not included*

ZONING

CD-168 - the zoning for Keith Business centre is flexible and can accommodate a variety of industrial and office, trade and business schools and recreation uses.

PARKING

Plenty of surface parking available

Opportunity







Avison Young is pleased to present the opportunity to lease office and warehouse space in Keith Business Centre. Unit 3 features a mix of warehouse, private offices and open workspaces with 11’ ceilings throughout.

Keith Business Centre is a 79,000 square foot light industrial development on 4 acres of land and is comprised of a combination of flex warehouse, office and Day Care units. This multi-tenant building has a strong mix of local and international businesses and offers many nearby amenities.

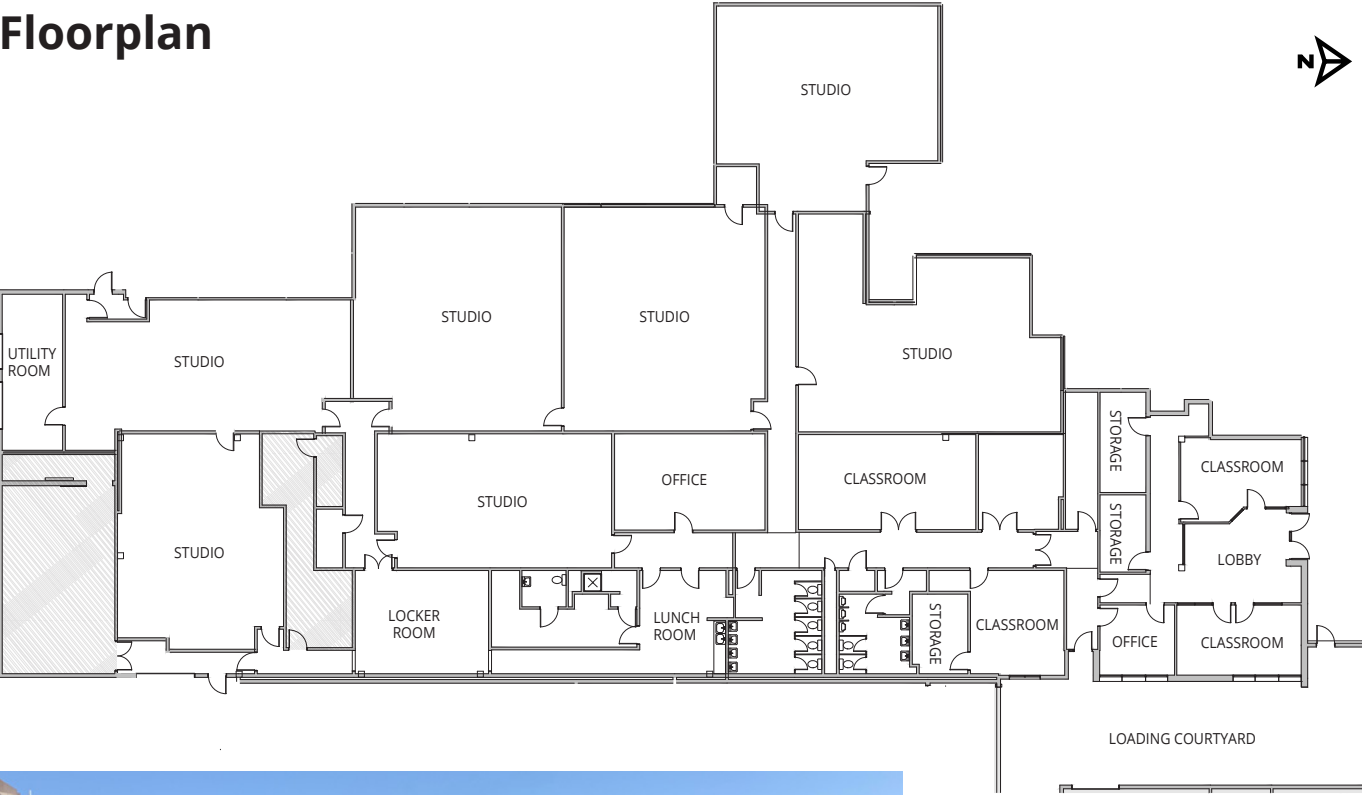
Location

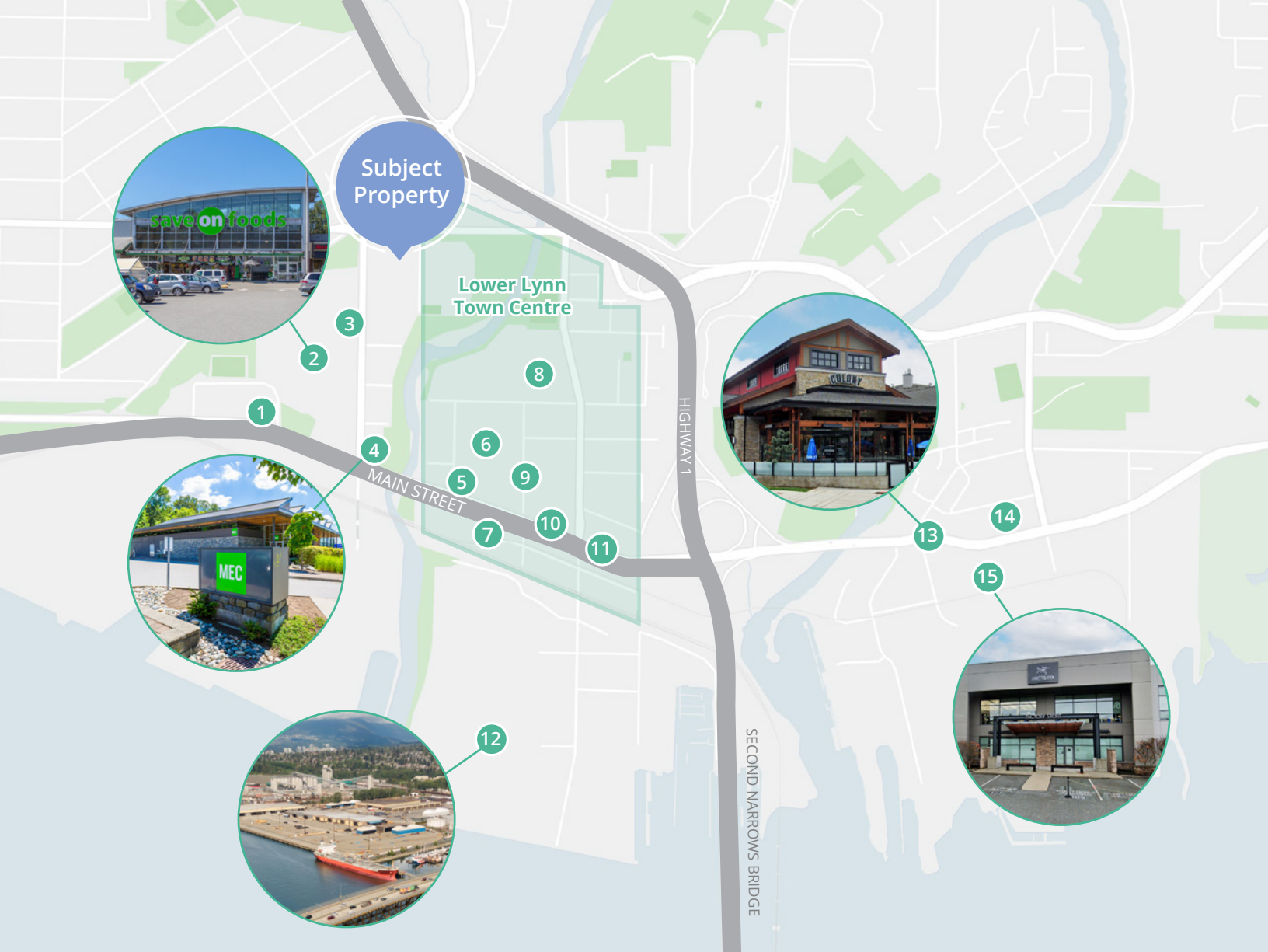
Keith Business Centre benefits from the prime corner location of Keith Road and Brooksbank Avenue, allowing for convenient public transit, easy commuting and quick access to Highway 1. The location neighbours a wide variety of businesses, such as the North Shore Winter Club and Park and Tilford Shopping Centre. Keith Business Centre is also a short walking distance from local trails and playgrounds within the Bridgeman and Lynn Creek Parks.

Property highlights

-  Ground floor flex office space with a mix of private offices and open work space
-  Two (2) dock loading doors and one (1) grade level loading door
-  Excellent exposure and signage opportunities
-  Accessible Washrooms
-  11’2” ceilings in warehouse areas
-  Adjacent to the North Shore Winter Club

Floorplan





Nearby amenities

- | | | |
|------------------------|--------------------|--------------------------------------|
| 1. Rona | 6. Canadian Tire | 11. A&W Canada |
| 2. Save-On-Foods | 7. Wildeye Brewing | 12. Lynnterm |
| 3. North Shore Studios | 8. Bridge Brewery | 13. Good Co. Northwoods |
| 4. MEC | 9. Tim Hortons | 14. Stong's Market |
| 5. McDonalds | 10. Wendy's | 15. Arc'teryx North Vancouver Outlet |

Contact for more information

Ian Whitchelo*, Principal
604 647 5095
ian.whitchelo@avisonyoung.com
**Ian Whitchelo Personal Real Estate Corporation*

Terry Thies*, Principal
604 646 8398
terry.thies@avisonyoung.com
**Terry Thies Personal Real Estate Corp.*

#2900-1055 West Georgia Street
P.O. Box 11109 Royal Centre
Vancouver, BC V6E 3P3, Canada

avisonyoung.ca

**AVISON
YOUNG**

